



Lodge Mill Lane, Turn Village

Offers Over £300,000 Leasehold

Welcome to this charming end-of-terrace house with stunning top-front views and an exceptional rear garden. Convenient on-street parking is available. Located on Lodge Mill Lane, it's a lovely place to live, close to Norden, Edenfield, and Ramsbottom, with scenic walking at the nearby lake.

Beautiful Scenic Views | Spacious Rear Garden | Welcoming Porch Vestibule | Bright & Airy Lounge | Functional Kitchen Layout | Three Comfortable Bedrooms | Convenient On-Street Parking | Easy Access To Local Amenities | Nearby Scenic Walking Paths | Family-Friendly Community | Ideal For Outdoor Activities | Close Proximity to Lodge |

01706 940 335

hello@brookesteel.co.uk

**brooke
steel**
ESTATES
local. experienced. trusted.



End of Terrace

Welcome to this charming end-of-terrace house, perfectly situated to offer stunning views from the top front. This property features an exceptional rear garden space, ideal for outdoor activities and relaxation. With convenient on-street parking right in front, access is effortless. As you enter, you're greeted by a welcoming porch vestibule that leads into a spacious lounge filled with natural light. The functional kitchen is perfect for cooking and entertaining, and the home includes three bedrooms for your convenience. Located on Lodge Mill Lane, this is a lovely place to live, with easy access to nearby areas such as Norden, Edenfield, and Ramsbottom. Enjoy scenic walks at the nearby lake, making this property an ideal choice for those who appreciate nature and community. Don't miss your chance to make this inviting house your new home!

Council Tax Band: B (Rossendale Borough Council)
Tenure: Leasehold
Electricity supply: Mains
Heating: Gas Mains
Water supply: Mains
Sewerage: Mains

Porch

Lounge

w: 4.27m x l: 4.27m (w: 14' x l: 14')

Kitchen/diner

w: 3.05m x l: 3.35m (w: 10' x l: 11')

Landing

Bedroom 1

w: 3.05m x l: 1.83m (w: 10' x l: 6')

Bedroom 2

w: 1.83m x l: 3.05m (w: 6' x l: 10')

Bedroom 3

w: 4.27m x l: 2.13m (w: 14' x l: 7')

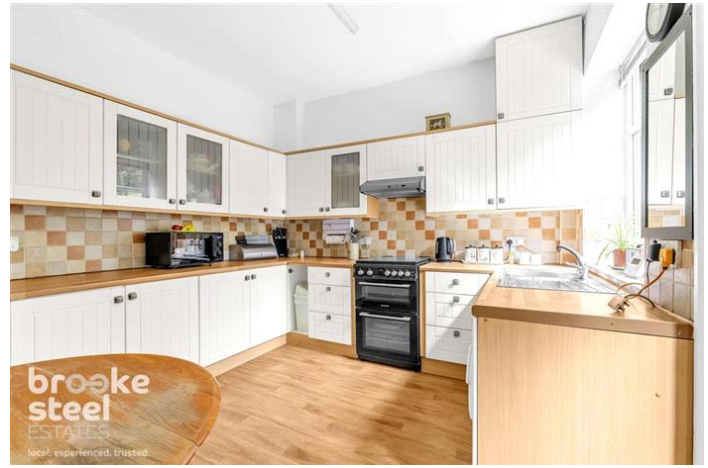
Bathroom

w: 2.13m x l: 2.13m (w: 7' x l: 7')

Externally

Front Garden

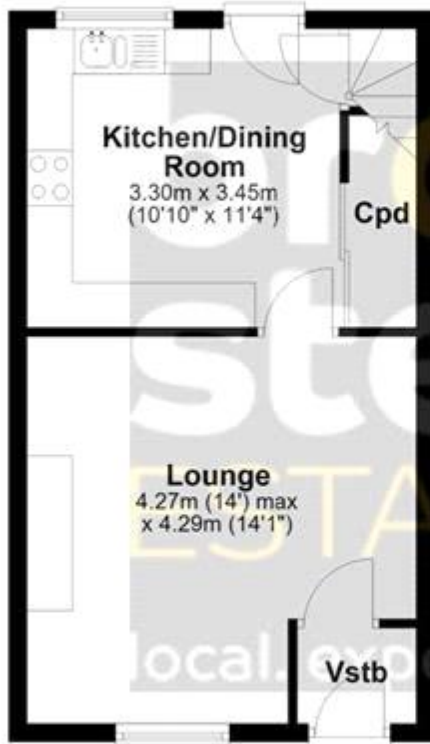
Rear Garden





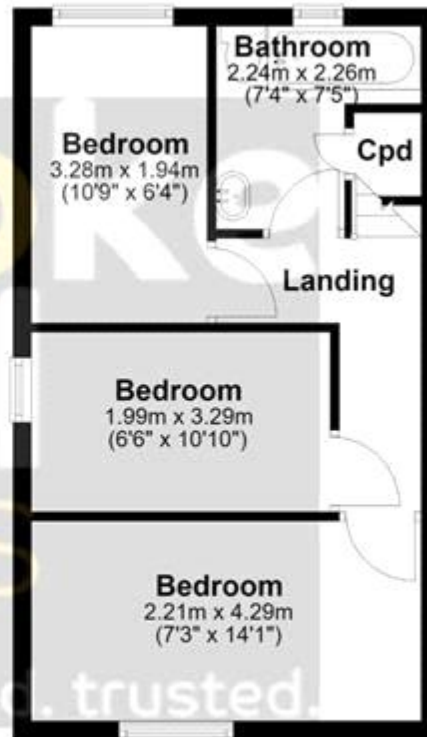
Ground Floor

Approx. 33.0 sq. metres (354.8 sq. feet)



First Floor

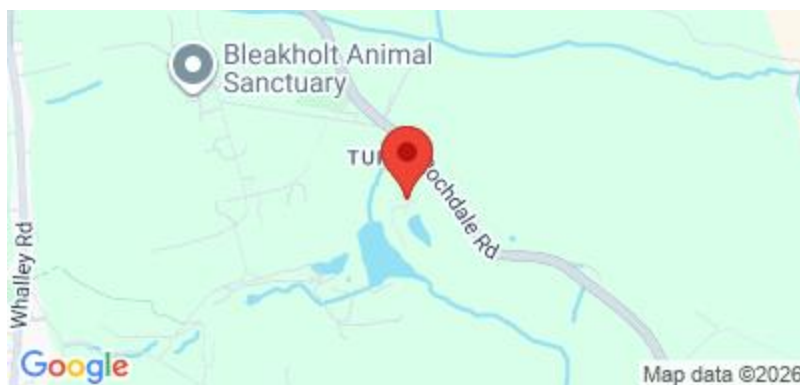
Approx. 33.0 sq. metres (354.8 sq. feet)



Total area: approx. 65.9 sq. metres (709.7 sq. feet)

Disclaimer: This floorplan is for illustrative purposes only. All measurements are approximate and not guaranteed to be exact or to scale. Whilst all efforts have been made to ensure its accuracy we make no guarantee, warranty or representation and any buyer should confirm measurements using their own source.

Plan produced using PlanUp.



Whilst every effort is made to ensure the accuracy of these details, it should be noted that the measurements are approximate only. Floorplans are for representation purposes only and prepared according to the RICS Code of Measuring Practice by our floorplan provider. Therefore, the layout of doors, windows and rooms are approximate and should be regarded as such by any prospective purchaser. Any internal photographs are intended as a guide only and it should not be assumed that any of the furniture/fitings are included in any sale. Where shown, details of lease, ground rent and service charge are provided by the vendor and their accuracy cannot be guaranteed, as the information may not have been verified and further checks should be made either through your solicitor/conveyance. Where appliances, including central heating, are mentioned, it cannot be assumed that they are in working order, as they have not been tested. Please also note that wiring, plumbing and drains have not been checked.